

AVALON ENVIRONMENTAL COMMISSION

3100 Dune Drive, Avalon, N J 08202

Meeting Agenda February 16, 2021 4:00 pm

1. Call to Order
2. Flag Salute
3. Open Public Meetings Act: **This meeting of the Avalon Environmental Commission is being conducted in accordance with the Public Meetings Act of New Jersey, Chapter 231, Public Law 19 and notice of this meeting specifying date, time and place has been published in the December 1, 2020 issue of the Atlantic City Press.**
4. Roll Call
5. Review of the minutes of the January 19, 2021 meeting.
6. DVMP—Aaron Baker, Lomax Consulting. (Attached to this e-mail are the plans for 16 E. 9th Street)
7. Ordinances—Review Cycles
8. ANJEC program for Reading Site Plans
9. Climate Change Bill from the Governor
10. Ideas for Plastic Pollution Reduction Act Programs
11. Updates: Pollinator Garden, Tree Committee, Armacost Park, Ordinances, Bay Issues
12. Public Comments
13. Adjournment

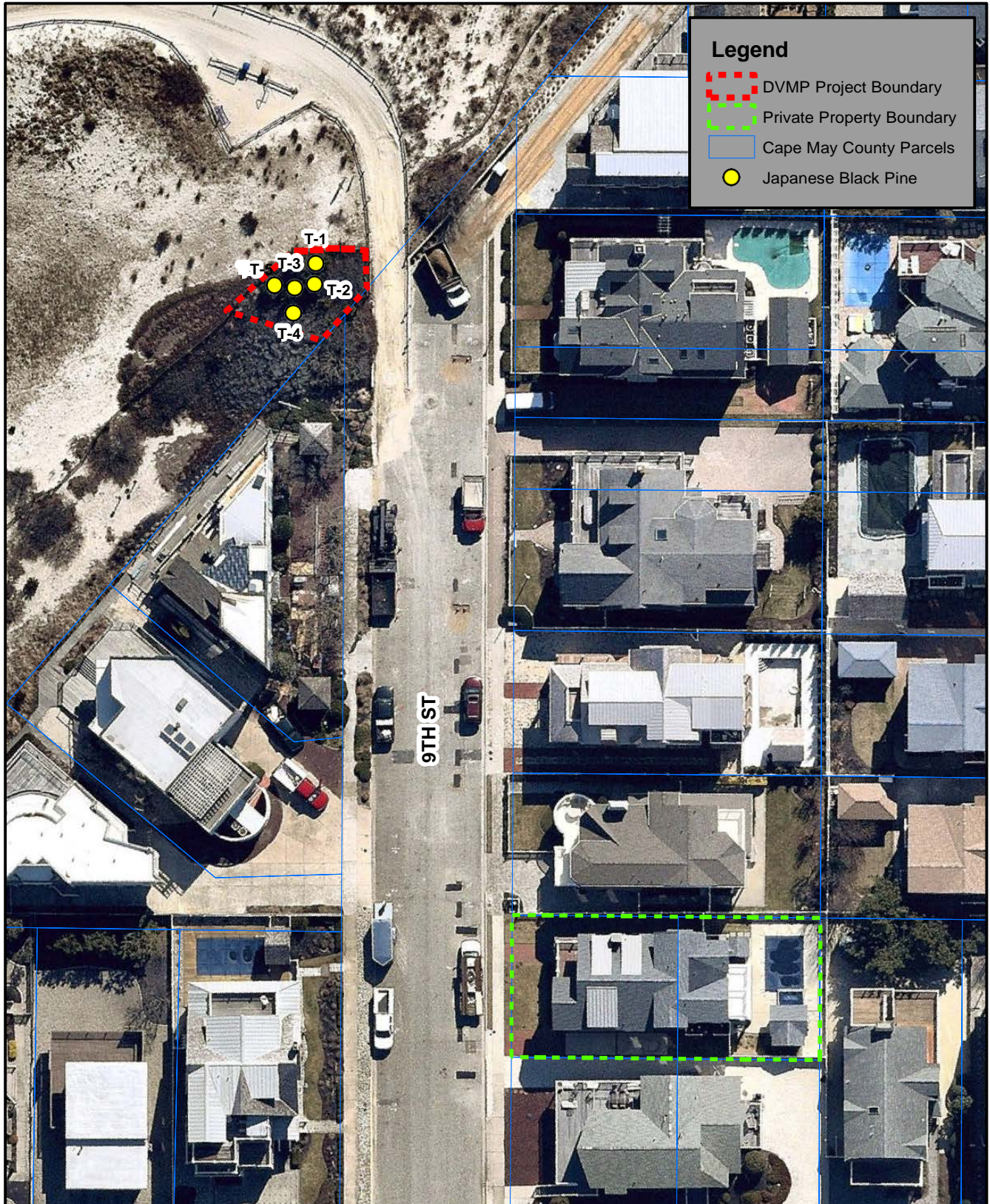


FIGURE 1: JAPANESE BLACK PINE LOCATIONS SHOWN ON 2019 AERIAL PHOTOGRAPH
 SOURCE: GIS DATA PROVIDED BY THE NJDEP, NEARMAP & THE CAPE MAY COUNTY PLANNING DEPARTMENT

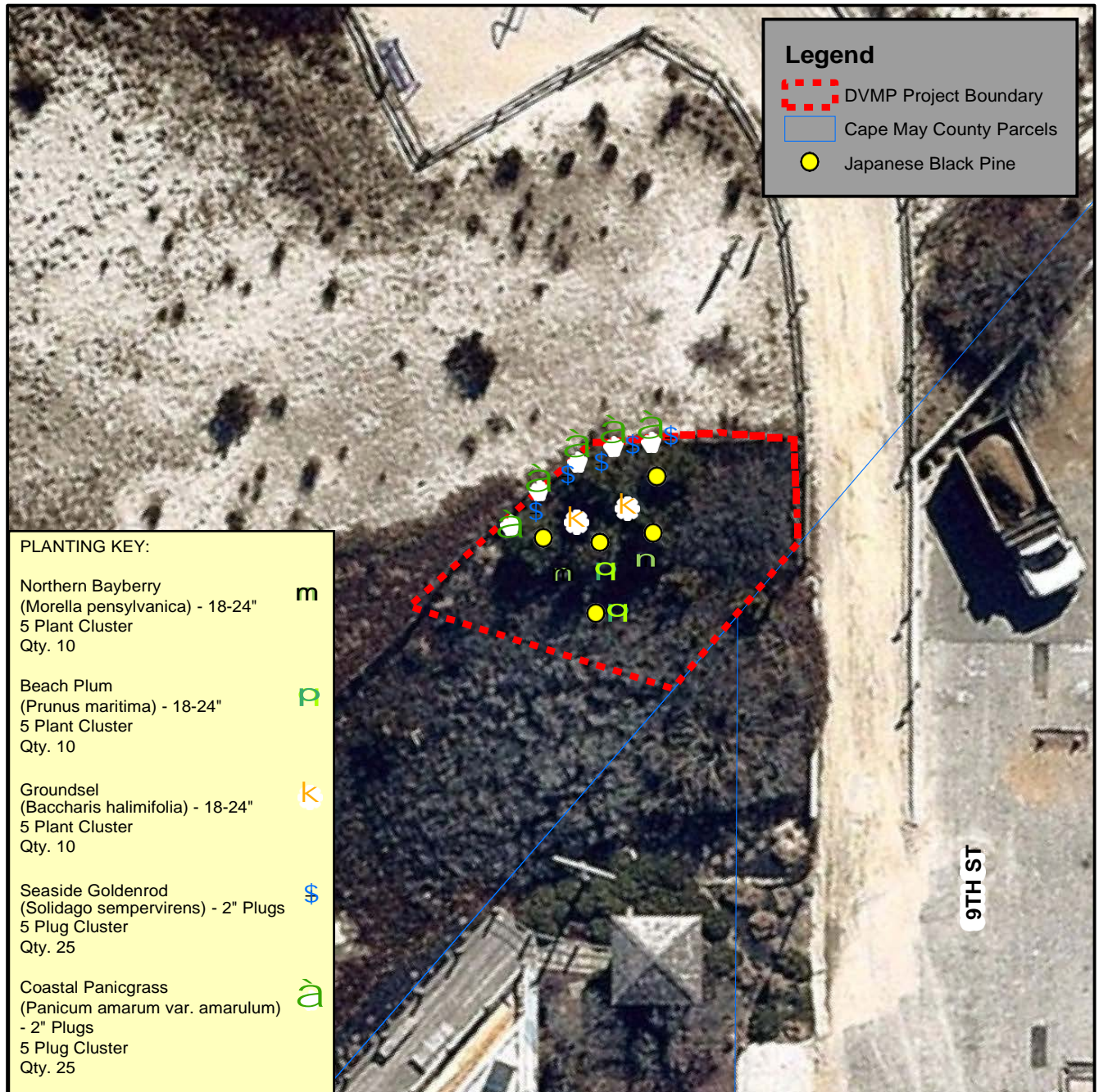


DATE:
10-27-20

DRAWN BY:
ACB

1 inch = 50 feet





Legend

- - - DVMP Project Boundary
- Cape May County Parcels
- Japanese Black Pine

PLANTING KEY:

Northern Bayberry (Morella pensylvanica) - 18-24" 5 Plant Cluster Qty. 10	m
Beach Plum (Prunus maritima) - 18-24" 5 Plant Cluster Qty. 10	p
Groundsel (Baccharis halimifolia) - 18-24" 5 Plant Cluster Qty. 10	k
Seaside Goldenrod (Solidago sempervirens) - 2" Plugs 5 Plug Cluster Qty. 25	\$
Coastal Panicgrass (Panicum amarum var. amarulum) - 2" Plugs 5 Plug Cluster Qty. 25	a

- NOTES:**
1. IRRIGATION TO TAKE PLACE DURING INSTALLATION AND THREE TIMES PER WEEK THROUGH THE GROWING SEASON UNLESS ADEQUATE PRECIPITATION NEGATES THE NEED. IRRIGATION REQUIREMENTS WILL BE RE-EVLAUTED DURING YEARLY MONITORING.
 2. ALL PLANTINGS TO BE PLANTED IN A COMPOST MIX WITH TERRA-SORB, OR SIMILAR SOIL AMENDMENT MIXED AT RECOMMENDED RATES. MULCH WITH HARDWOOD BARK MULCH.
 3. NATIVE GRASSES AND HERBACIOUS PLUGS TO BE PLANTED ON 18" CENTERS TO PROVIDE GROUND COVER.
 4. ALL INVASIVE VEGETATION TO BE REMOVED WITH CAUTION TO REDUCE IMPACTS TO THE DUNES AND EXISTING NATIVE VEGETATION.
 5. TEMPORARY, ABOVE GROUND,(HUNTER HIGH EFFICIENCY MP ROTATOR HEAD) OR DRIP IRRIGATION IS REQUIRED TO COVER ALL PLANTED VEGETATION WITHIN THE LIMIT OF TEMPORARY IRRIGATION AS SHOWN ON THE PLAN.

<p>FIGURE 2: PROPOSED RESTORATION PLANTING PLAN SHOWN ON 2019 AERIAL PHOTOGRAPH</p> <p>SOURCE: GIS DATA PROVIDED BY THE NJDEP, NEARMAP & THE CAPE MAY COUNTY PLANNING DEPARTMENT</p>		DATE: 10-27-20	DRAWN BY: ACB	
		1 inch = 20 feet		