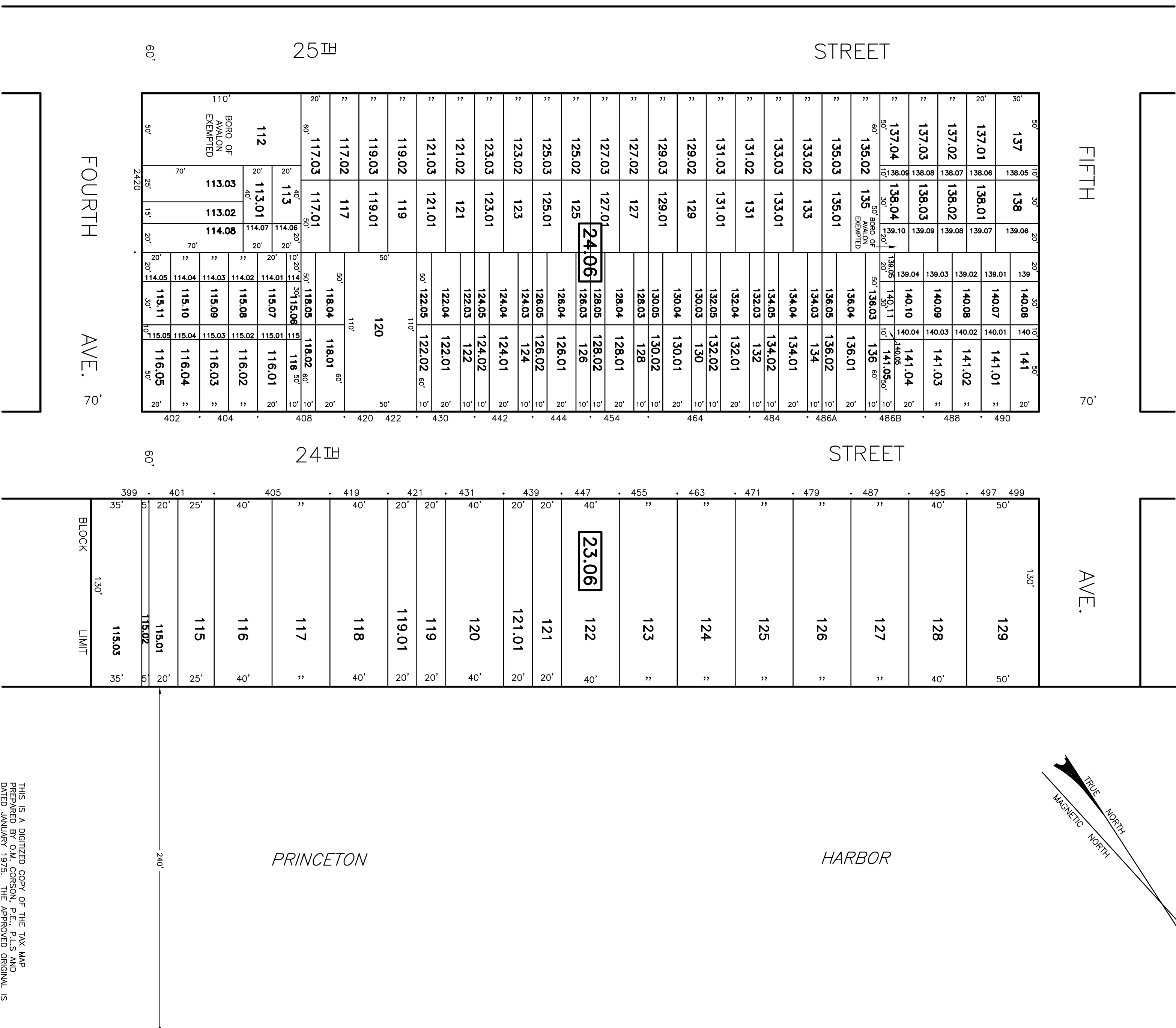


SHEET 28  
SHEET 37



THIS IS A DIGITIZED COPY OF THE TAX MAP  
 PREPARED BY OMA, CONSON, FELS, PALS AND  
 ASSOCIATES, INC., ENGINEERS AND SURVEYORS,  
 ON FILE IN THE OFFICE OF THE ENGINEER.

TAX MAP  
 BOROUGH OF AVALON  
 CAPE MAY COUNTY,  
 NEW JERSEY  
 SCALE: 1" = 50'  
 FEBRUARY 2007  
 JAMES K. WALZ  
 PROFESSIONAL LAND SURVEYOR  
 NEW JERSEY LICENSE NO. 240503402400  
 27 BLEEKER STREET MILLBURN, N.J. 07041