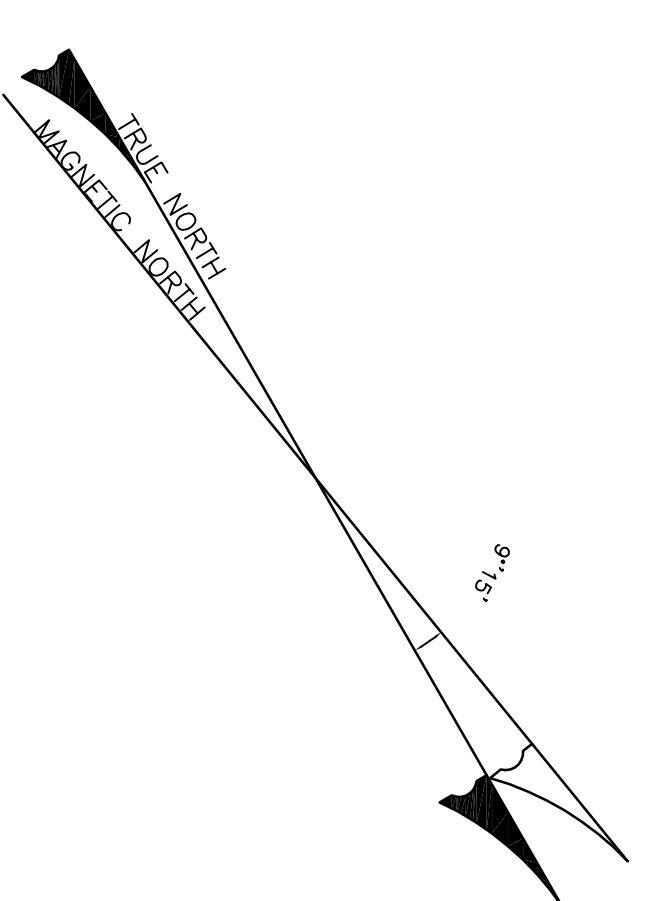
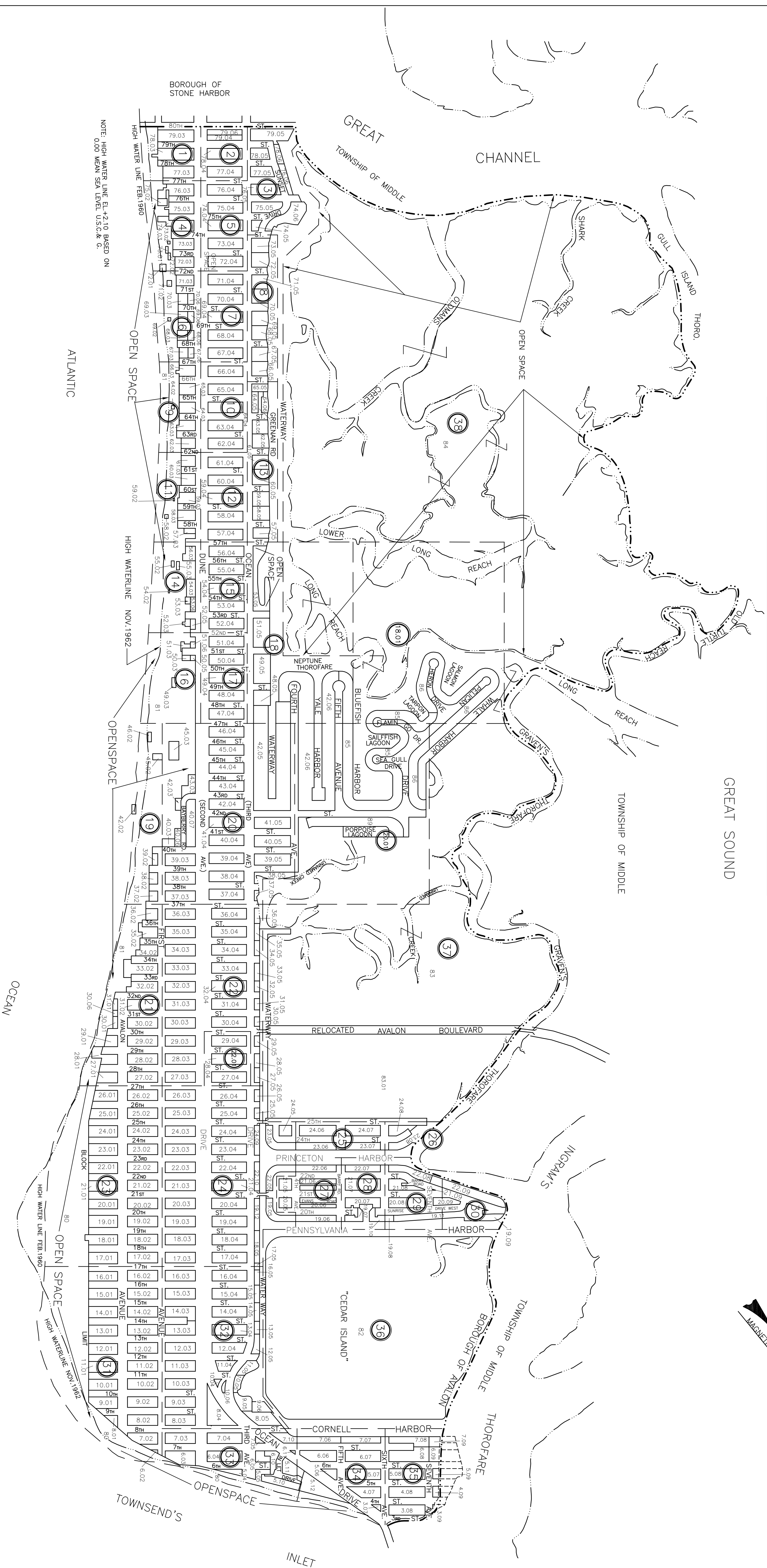


REVISIONS		
DATE	NAME	NO.
2/8/07	JAMES K. WALZ	24GS03402400
5/5/08	JAMES K. WALZ	24GS03402400

LEGEND	
SHEET NUMBER	1
BLOCK NUMBER	17.02
ROADS	FIRST AVE.
SHEET DIVISION LINE (KEY SHEET)	---
LOT LINE	---
BOUNDARY	---
BLOCK LIMIT	---
MATCH LINE	---
LOT NUMBER	158
LOT DIMENSION	125'
ACREAGE	75.0 AC.
STREET ADDRESS	1407



NOTE: HIGH WATER LINE IS +2.10 BASED ON 0.00 MEAN SEA LEVEL U.S.C. & G.

ATLANTIC

GREAT SOUND

OCEAN

NOTE: BLOCK DIMENSIONS AND STREET WIDTHS NOT TO SCALE.
THIS TAX MAP SUPERCEDES THE TAX MAP APPROVED MAY 8, 1975.

I HEREBY CERTIFY THAT THIS MAP HAS BEEN MADE UNDER MY IMMEDIATE SUPERVISION AND COMPLIES WITH THE LAWS OF THE STATE OF NEW JERSEY.

THE AREAS, BOUNDARIES AND DIMENSIONS SHOWN ON THIS TAX MAP ARE DERIVED FROM GROUND SURVEYS, AERIAL SURVEYS, WILLS, AND ARE TO BE USED FOR ASSESSMENT PURPOSES ONLY.

JAMES K. WALZ, L.S. - LIC. NO. 24GS03402400

BOROUGH OF AVALON
CAPE MAY COUNTY, NEW JERSEY
SCALE: 1"=800'
FEBRUARY 2007

PROFESSIONAL LAND SURVEYOR
NEW JERSEY LICENSE NO. 24GS03402400
27 BLEEKER STREET MILLBURN, N.J. 07041
TO SHOW CONDITIONS AS OF MAY 2008