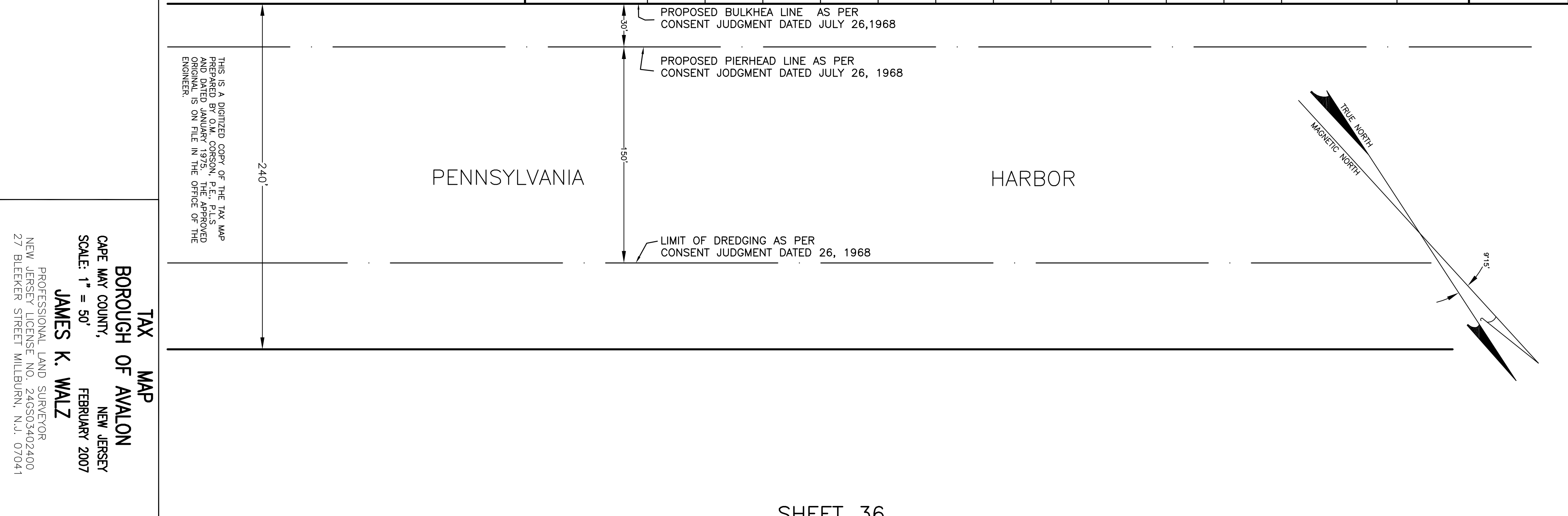


SHEET 28



TAX MAP
 BOROUGH OF AVALON
 CAPE MAY COUNTY,
 NEW JERSEY
 SCALE: 1" = 50'
 JAMES K. WALZ
 PROFESSIONAL LAND SURVEYOR
 NEW JERSEY LICENSE NO. 246033402400
 27 BLECKER STREET WILLIAMSBURG, N.J. 07041
 FEBRUARY 2007

THIS IS A DIGITIZED COPY OF THE TAX MAP
 PREPARED BY OAK CONSON, P.E., PLSD
 AND DATED JANUARY 1972. THE APPROVED
 VERSION OF THIS MAP IS FILED IN THE OFFICE OF THE
 ENGINEER.